



www.cnrs.fr

# Visit of the Georgian delegation

ERASMUS+ HERD



# The CNRS

- ◉ The National Centre for Scientific Research is an interdisciplinary public research organisation under the administrative supervision of the French Ministry of Higher Education and Research.



**3.3  
billion**  
A budget of

**33,000**  
people dedicated  
to research

**1,144**  
research  
laboratories in  
France and  
abroad

- ◉ Missions
  - ◉ The French state has entrusted the CNRS with the role of advancing knowledge for the benefit of society. The organisation seeks to accomplish this national mission while respecting ethical rules and showing commitment to professional equality.

# CNRS Management

## Management Board



### **President and CEO**

Antoine Petit

### **Cabinet Secretary**

Marie-Hélène Beauvais

### **Chief Research Officer**

Alain Schuhl

### **Chief Resource Officer**

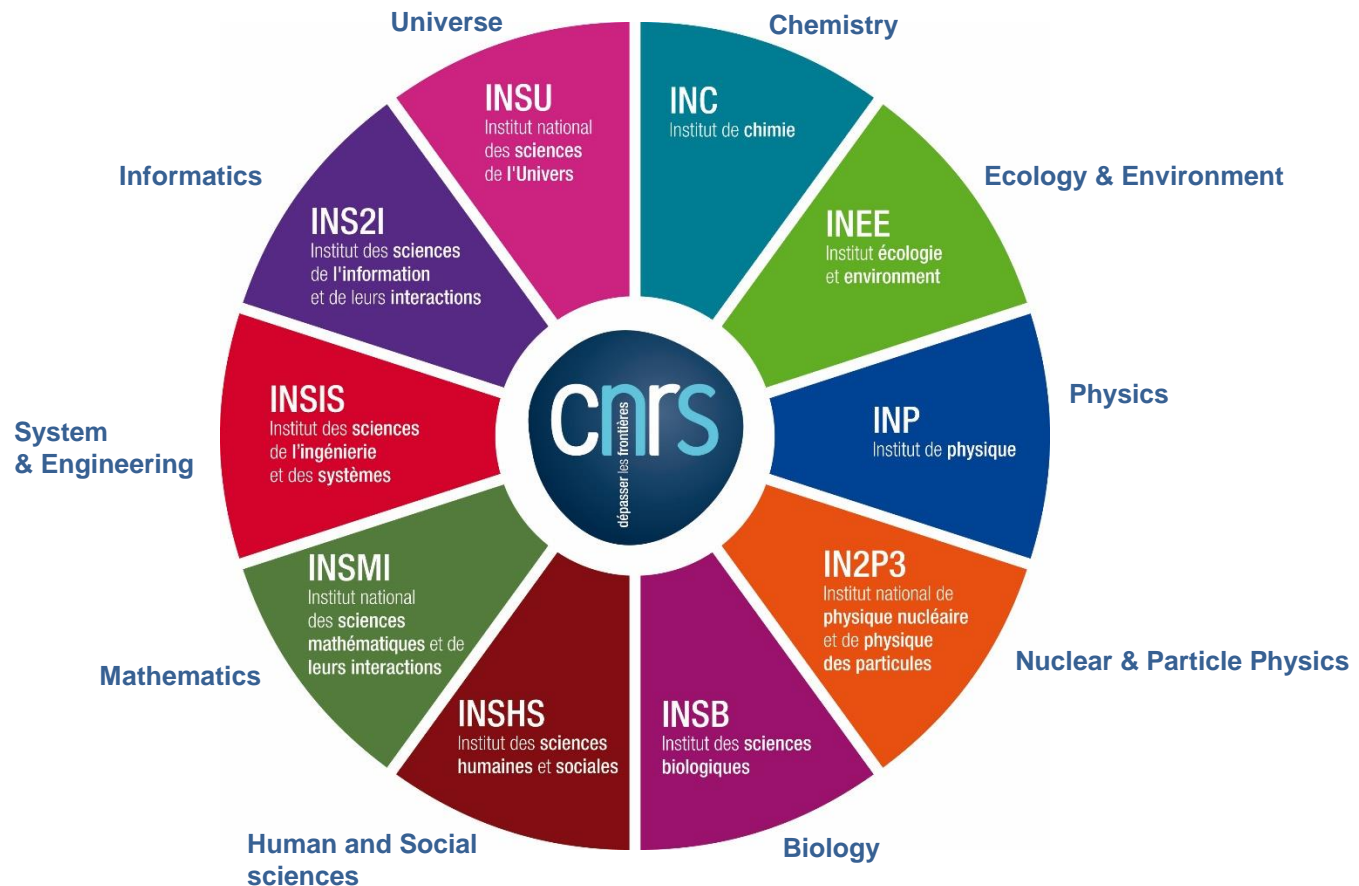
Christophe Coudroy

### **Chief Technology Transfer Officer**

Jean-Luc Moullet

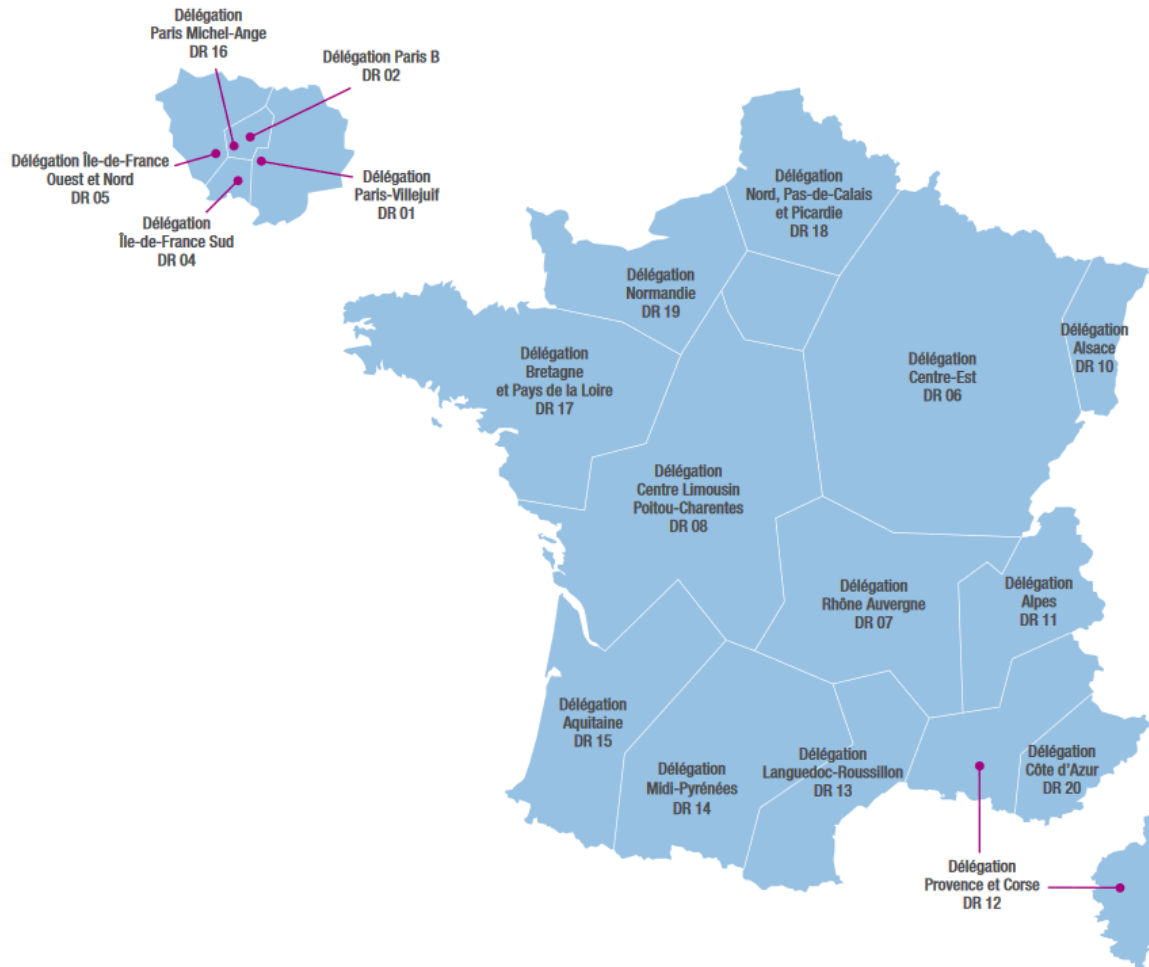
# The Institutes of CNRS

- The ten CNRS Institutes cover more or less extensive scientific fields, share projects, and promote cooperation between disciplines. They are directed by specialists in their domains who come from either the CNRS or the universities.



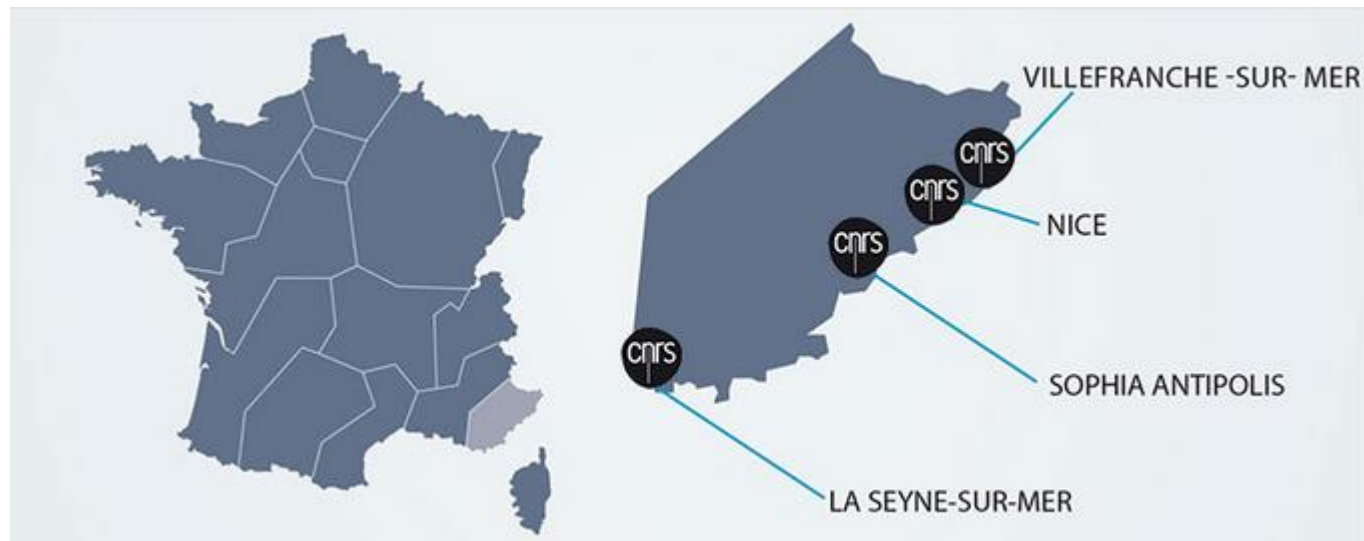
# Territorial organisation of CNRS

## LES DIX-HUIT DÉLÉGATIONS RÉGIONALES DU CNRS



# CNRS Côte d'Azur Delegation

- The delegation ensures the regional representation of the establishment in front of all our partners and a local management. In liaison with the general management and scientific institutes, the delegation manages the resources of the CNRS: administrative and financial management of the units and personalised management of the CNRS agents in the district. It provides logistical support to laboratories and provides them with contacts in order to establish a link with the socio-economic world and promote research work.

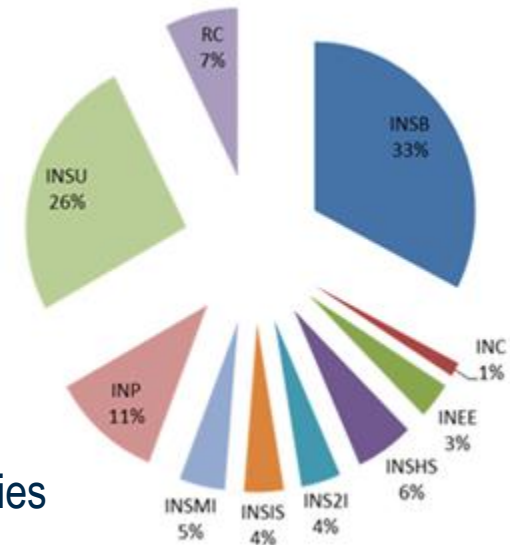




# CNRS Côte d'Azur Delegation :

## Its main research areas divided into institutes

- On the Côte d'Azur, with the Regional Delegation, the CNRS has 28 research and service units spread over nine of the ten CNRS institutes.
- Biochemistry, cell biology, physiology, genetics, pharmacology
- Geosciences, astrophysics, astronomy and oceanography
- Materials, semiconductors, electronic components
- Mathematics, systems dynamics, processing of the signal
- Archaeology, geography, sociology, linguistics, Philosophy
- Law and industrial economics
- Information and Communication Sciences and Technologies



# CNRS Delegation Côte d'Azur: Its main research areas divided into institutes



La biologie



La chimie



L'écologie et l'environnement



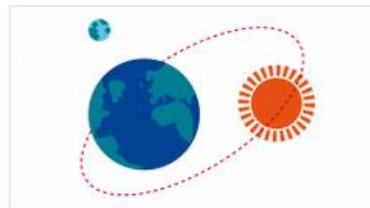
Les sciences humaines et sociales



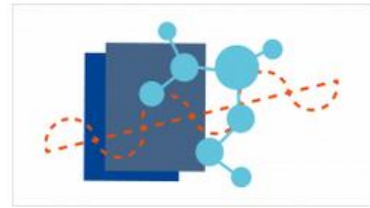
L'ingénierie et les systèmes



Les mathématiques



Les sciences de la terre et de l'univers



La physique

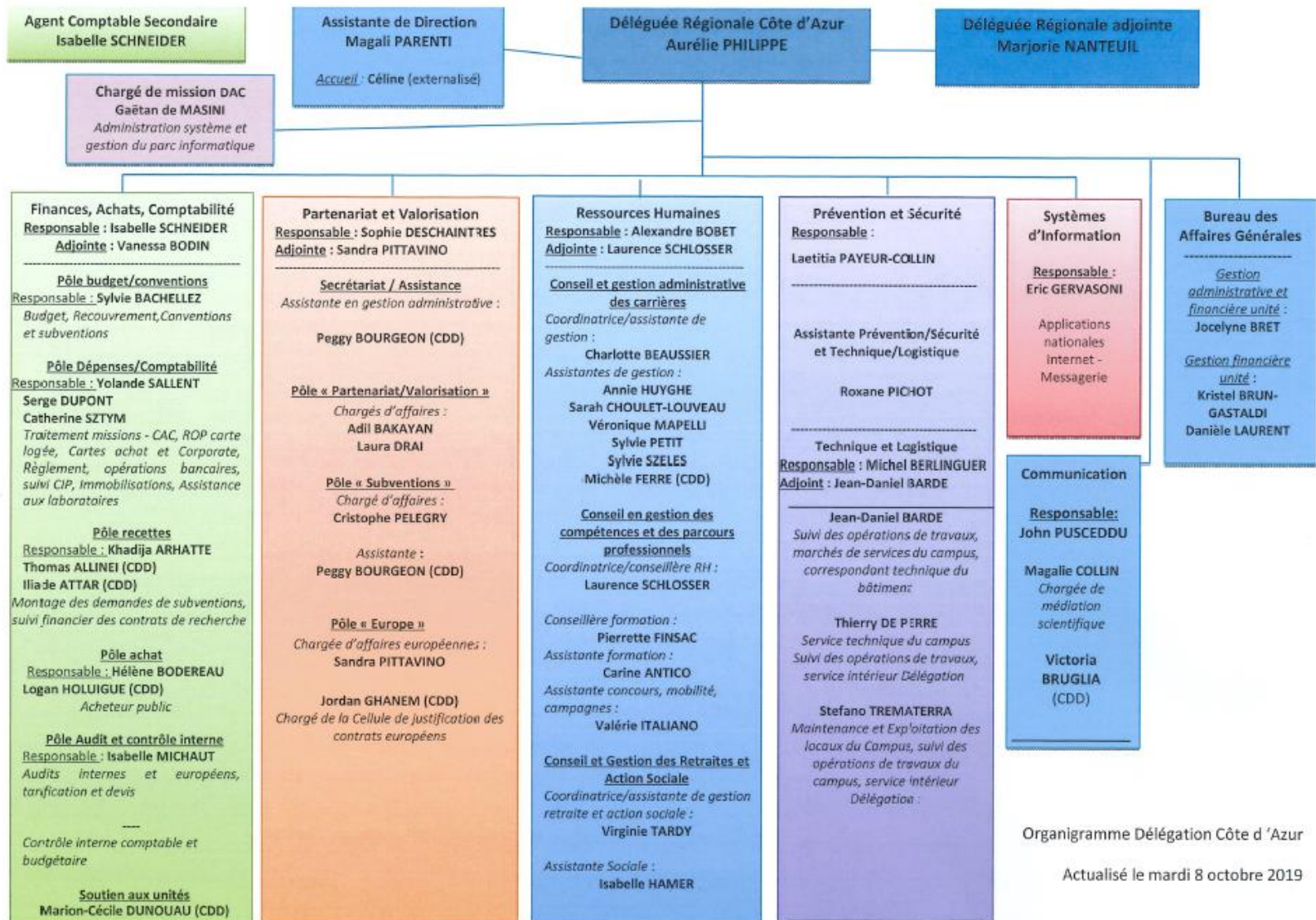


Les sciences de l'information





# CNRS Côte d'Azur Delegation



Organigramme Délégation Côte d'Azur

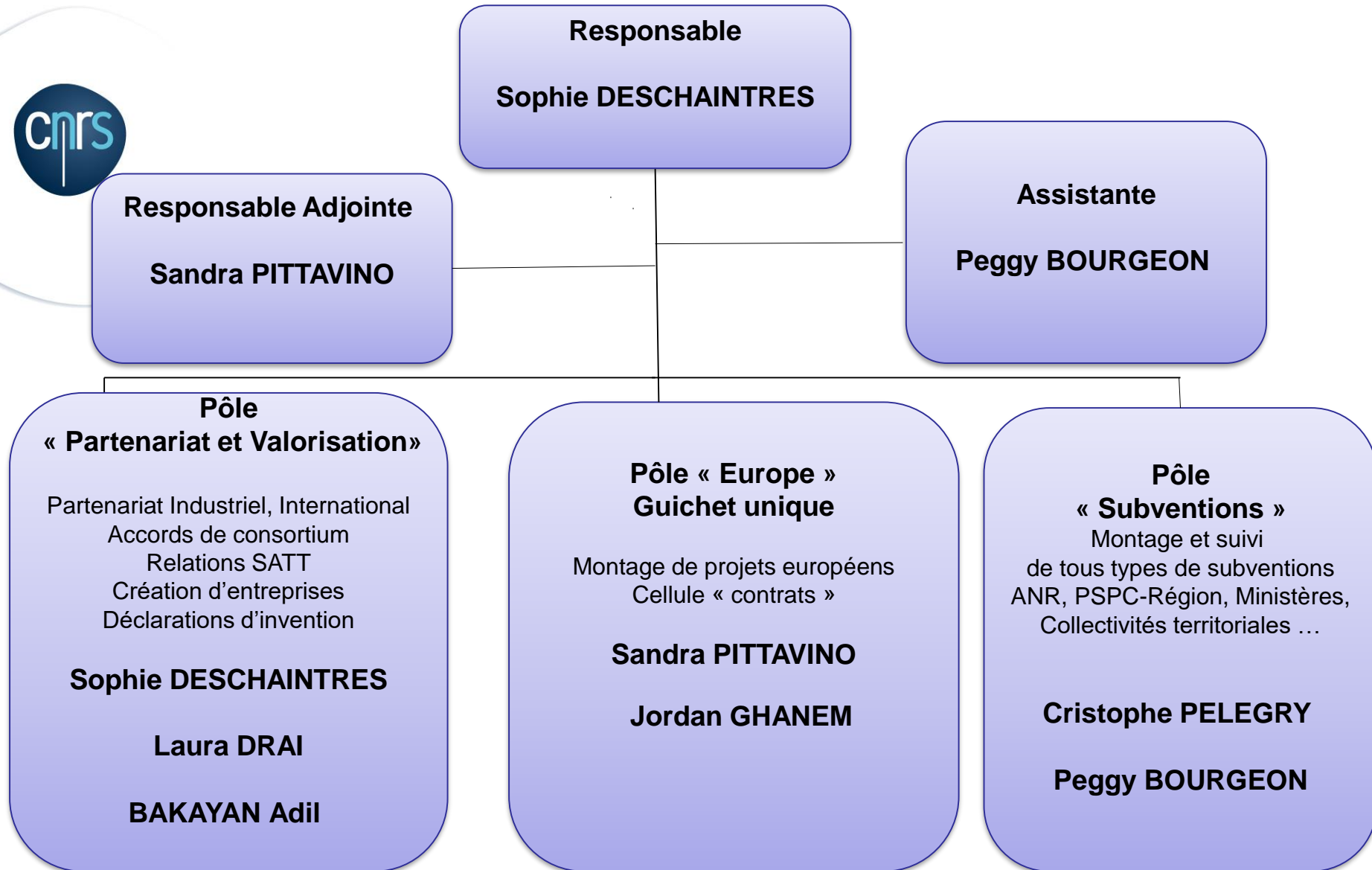
Actualisé le mardi 8 octobre 2019

# Missions of the Partnership and Valuation Service

- ◉ Advise and assist researchers in their applications for grants/assistance to French or foreign public bodies
- ◉ Advise and assist researchers in their responses to European calls for tenders: H2020, Interreg (Alcotra, Med...)
- ◉ Support researchers in their relations with industry by promoting the CNRS's partnership policy in terms of intellectual property and the exploitation of results.
- ◉ Raise awareness among researchers and support them in the process of protecting and promoting their research results.
- ◉ Support researchers and laboratories in their efforts to set up a company, apply for multiple activities or authorize scientific competitions.



# Partnership and Valuation Service Organisation



# SPV Activities



- 641 agreements and partnership agreements open 2018
- 385 signed agreement including **195 agreements with financial flow : 22,30 M€**
  - **8 European grant agreements to 7,15 M€**
  - **95 subsidies to 10,22 M€ (including 24 ANR: 4,18M€)**
- 49 European projects by the Europe Office
- 33 declarations of invention files open ; 11 patents registered

# Missions of the Partnership and Valuation Service

- ⊙ « Europe » Office → SINGLE GUICHET on European contracts
- ⊙ Project development and support to project leaders:
  - The European Affairs Officer advises and assists:
    - to the financial package,
    - the administrative set-up of projects,
    - Monitoring of the contractual management of projects (amendments: changes in scientific orientations, new partners, etc.)
  - The European Affairs Officer also advises:
    - on project writing,
    - on structuring aspects,
    - on management.



# The European Contracts office



- ◎ The project manager of the "Contracts" Unit ensures:
  - Daily monitoring of the project (coordinator's contact point and referee of the laboratory/ scientific manager)
  - Time sheet tracking and CNRS agent management via the TEMPO application
  - The follow-up of the time sheets of the agents of the University of Nice
  
- ◎ It acts in collaboration with
  - Internally: with the project leader, the laboratory, SFAC, SRH, European Affairs Officer and other CNRS delegations
  - Externally: with other partners, Europe (European Commission, ERC...), other laboratory authorities (linked third parties)





# Periodic Report (art.20 of GA)



## ⦿ WHEN?

Within 60 days following the end of each reporting period

## ⦿ WHAT?

Periodic report includes:

- Technical report,
- Financial report – Individual financial statement from each Beneficiary + Periodic summary financial statement

## ⦿ HOW?

Via Participant portal → Manage Project

# The European Contract office

- The purpose of the financial justification of a contract is to verify compliance with the eligibility rules of the European Union and the CNRS. All expenditure categories are reported :
  - Personnel costs : Activities of temporary and permanent staff involved (time sheets or any alternative evidence such as a laboratory notebook)
  - Goods and services : Control of consumables and their supporting documents in accordance with European and CNRS eligibility rules (invoices, purchase orders, expense statements, mission program...)
  - Travel : Missions expenses and their supporting documents (mission orders, invitation, meeting programme...)
  - Equipment : Expenses related to the use of equipment (equipment time sheet)



# The European Contract office

Grant Agreement number: [insert number][insert acronym][insert call/sub-call identifier]

Associated with document Ref. Ares(2015)1955730 - 08/05/2015

① print format A4  
landscape

## MODEL ANNEX 4 FOR H2020 GENERAL MGA — MULTI

### FINANCIAL STATEMENT FOR [BENEFICIARY [name]/ LINKED THIRD PARTY [name]] FOR REPORTING PERIOD [reporting period]

Eligible <sup>1</sup> costs (per budget category)											Receipts		EU contribution			Additional information					
A. Direct personnel costs				B. Direct costs of subcontracting		[C. Direct costs of fin. support]		D. Other direct costs		E. Indirect costs <sup>2</sup>		[F. Costs of ...]		Total costs	Receipts	Reimbursement rate %	Maximum EU contribution <sup>3</sup>	Requested EU contribution	Information for indirect costs:		
A.1 Employees (or equivalent)		A.4 SME owners without salary						D.1 Travel		[D.4 Costs of large research infrastructure]						Receipts of the action, to be reported in the last reporting period, according to Article 5.3.3			Costs of in-kind contributions not used on premises		
A.2 Natural persons under direct contract		A.5 Beneficiaries that are natural persons without salary						D.2 Equipment													
A.3 Seconded persons								D.3 Other goods and services													
[A.6 Personnel for providing access to research infrastructure]																					
Form of costs <sup>4</sup>		Actual		Unit		Unit		Actual		Actual		Actual		Actual		Flat-rate <sup>5</sup>		Unit		Unit	
																25%					
		a		Total b		No hours		Total c		d		[e]		f		[g]		h=0,25 x (a+b+c+ +d+e+g) + f+ +i+ +j+ +k+ +l+ +m+ +n+ +o+ +p+ +q+ +r+ +s+ +t+ +u+ +v+ +w+ +x+ +y+ +z+ +aa+ +ab+ +ac+ +ad+ +ae+ +af+ +ag+ +ah+ +ai+ +aj+ +ak+ +al+ +am+ +an+ +ao+ +ap+ +aq+ +ar+ +as+ +at+ +au+ +av+ +aw+ +ax+ +ay+ +az+ +ba+ +bb+ +bc+ +bd+ +be+ +bf+ +bg+ +bh+ +bi+ +bj+ +bk+ +bl+ +bm+ +bn+ +bo+ +bp+ +bq+ +br+ +bs+ +bt+ +bu+ +bv+ +bw+ +bx+ +by+ +bz+ +ca+ +cb+ +cc+ +cd+ +ce+ +cf+ +cg+ +ch+ +ci+ +cj+ +ck+ +cl+ +cm+ +cn+ +co+ +cp+ +cq+ +cr+ +cs+ +ct+ +cu+ +cv+ +cw+ +cx+ +cy+ +cz+ +da+ +db+ +dc+ +dd+ +de+ +df+ +dg+ +dh+ +di+ +dj+ +dk+ +dl+ +dm+ +dn+ +do+ +dp+ +dq+ +dr+ +ds+ +dt+ +du+ +dv+ +dw+ +dx+ +dy+ +dz+ +ea+ +eb+ +ec+ +ed+ +ee+ +ef+ +eg+ +eh+ +ei+ +ej+ +ek+ +el+ +em+ +en+ +eo+ +ep+ +eq+ +er+ +es+ +et+ +eu+ +ev+ +ew+ +ex+ +ey+ +ez+ +fa+ +fb+ +fc+ +fd+ +fe+ +ff+ +fg+ +fh+ +fi+ +fj+ +fk+ +fl+ +fm+ +fn+ +fo+ +fp+ +fq+ +fr+ +fs+ +ft+ +fu+ +fv+ +fw+ +fx+ +fy+ +fz+ +ga+ +gb+ +gc+ +gd+ +ge+ +gf+ +gg+ +gh+ +gi+ +gj+ +gk+ +gl+ +gm+ +gn+ +go+ +gp+ +gq+ +gr+ +gs+ +gt+ +gu+ +gv+ +gw+ +gx+ +gy+ +gz+ +ha+ +hb+ +hc+ +hd+ +he+ +hf+ +hg+ +hh+ +hi+ +hj+ +hk+ +hl+ +hm+ +hn+ +ho+ +hp+ +hq+ +hr+ +hs+ +ht+ +hu+ +hv+ +hw+ +hx+ +hy+ +hz+ +ia+ +ib+ +ic+ +id+ +ie+ +if+ +ig+ +ih+ +ii+ +ij+ +ik+ +il+ +im+ +in+ +io+ +ip+ +iq+ +ir+ +is+ +it+ +iu+ +iv+ +iw+ +ix+ +iy+ +iz+ +ja+ +jb+ +jc+ +jd+ +je+ +jf+ +jg+ +jh+ +ji+ +jj+ +jk+ +jl+ +jm+ +jn+ +jo+ +jp+ +jq+ +jr+ +js+ +jt+ +ju+ +jv+ +jw+ +jx+ +jy+ +jz+ +ka+ +kb+ +kc+ +kd+ +ke+ +kf+ +kg+ +kh+ +ki+ +kj+ +kl+ +km+ +kn+ +ko+ +kp+ +kq+ +kr+ +ks+ +kt+ +ku+ +kv+ +kw+ +kx+ +ky+ +kz+ +la+ +lb+ +lc+ +ld+ +le+ +lf+ +lg+ +lh+ +li+ +lj+ +lk+ +ll+ +lm+ +ln+ +lo+ +lp+ +lq+ +lr+ +ls+ +lt+ +lu+ +lv+ +lw+ +lx+ +ly+ +lz+ +ma+ +mb+ +mc+ +md+ +me+ +mf+ +mg+ +mh+ +mi+ +mj+ +mk+ +ml+ +mm+ +mn+ +mo+ +mp+ +mq+ +mr+ +ms+ +mt+ +mu+ +mv+ +mw+ +mx+ +my+ +mz+ +na+ +nb+ +nc+ +nd+ +ne+ +nf+ +ng+ +nh+ +ni+ +nj+ +nk+ +nl+ +nm+ +nn+ +no+ +np+ +nq+ +nr+ +ns+ +nt+ +nu+ +nv+ +nw+ +nx+ +ny+ +nz+ +oa+ +ob+ +oc+ +od+ +oe+ +of+ +og+ +oh+ +oi+ +oj+ +ok+ +ol+ +om+ +on+ +oo+ +op+ +oq+ +or+ +os+ +ot+ +ou+ +ov+ +ow+ +ox+ +oy+ +oz+ +pa+ +pb+ +pc+ +pd+ +pe+ +pf+ +pg+ +ph+ +pi+ +pj+ +pk+ +pl+ +pm+ +pn+ +po+ +pp+ +pq+ +pr+ +ps+ +pt+ +pu+ +pv+ +pw+ +px+ +py+ +pz+ +qa+ +qb+ +qc+ +qd+ +qe+ +qf+ +qg+ +qh+ +qi+ +qj+ +qk+ +ql+ +qm+ +qn+ +qo+ +qp+ +qq+ +qr+ +qs+ +qt+ +qu+ +qv+ +qw+ +qx+ +qy+ +qz+ +ra+ +rb+ +rc+ +rd+ +re+ +rf+ +rg+ +rh+ +ri+ +rj+ +rk+ +rl+ +rm+ +rn+ +ro+ +rp+ +rq+ +rr+ +rs+ +rt+ +ru+ +rv+ +rw+ +rx+ +ry+ +rz+ +sa+ +sb+ +sc+ +sd+ +se+ +sf+ +sg+ +sh+ +si+ +sj+ +sk+ +sl+ +sm+ +sn+ +so+ +sp+ +sq+ +sr+ +ss+ +st+ +su+ +sv+ +sw+ +sx+ +sy+ +sz+ +ta+ +tb+ +tc+ +td+ +te+ +tf+ +tg+ +th+ +ti+ +tj+ +tk+ +tl+ +tm+ +tn+ +to+ +tp+ +tq+ +tr+ +ts+ +tu+ +tv+ +tw+ +tx+ +ty+ +tz+ +ua+ +ub+ +uc+ +ud+ +ue+ +uf+ +ug+ +uh+ +ui+ +uj+ +uk+ +ul+ +um+ +un+ +uo+ +up+ +uq+ +ur+ +us+ +ut+ +uu+ +uv+ +uw+ +ux+ +uy+ +uz+ +va+ +vb+ +vc+ +vd+ +ve+ +vf+ +vg+ +vh+ +vi+ +vj+ +vk+ +vl+ +vm+ +vn+ +vo+ +vp+ +vq+ +vr+ +vs+ +vt+ +vu+ +vv+ +vw+ +vx+ +vy+ +vz+ +wa+ +wb+ +wc+ +wd+ +we+ +wf+ +wg+ +wh+ +wi+ +wj+ +wk+ +wl+ +wm+ +wn+ +wo+ +wp+ +wq+ +wr+ +ws+ +wt+ +wu+ +wv+ +ww+ +wx+ +wy+ +wz+ +xa+ +xb+ +xc+ +xd+ +xe+ +xf+ +xg+ +xh+ +xi+ +xj+ +xk+ +xl+ +xm+ +xn+ +xo+ +xp+ +xq+ +xr+ +xs+ +xt+ +xu+ +xv+ +xw+ +xx+ +xy+ +xz+ +ya+ +yb+ +yc+ +yd+ +ye+ +yf+ +yg+ +yh+ +yi+ +yj+ +yk+ +yl+ +ym+ +yn+ +yo+ +yp+ +yq+ +yr+ +ys+ +yt+ +yu+ +yv+ +yw+ +yx+ +yy+ +yz+ +za+ +zb+ +zc+ +zd+ +ze+ +zf+ +zg+ +zh+ +zi+ +zj+ +zk+ +zl+ +zm+ +zn+ +zo+ +zp+ +zq+ +zr+ +zs+ +zt+ +zu+ +zv+ +zw+ +zx+ +zy+ +zz+ +aa+ +ab+ +ac+ +ad+ +ae+ +af+ +ag+ +ah+ +ai+ +aj+ +ak+ +al+ +am+ +an+ +ao+ +ap+ +aq+ +ar+ +as+ +at+ +au+ +av+ +aw+ +ax+ +ay+ +az+ +ba+ +bb+ +bc+ +bd+ +be+ +bf+ +bg+ +bh+ +bi+ +bj+ +bk+ +bl+ +bm+ +bn+ +bo+ +bp+ +bq+ +br+ +bs+ +bt+ +bu+ +bv+ +bw+ +bx+ +by+ +bz+ +ca+ +cb+ +cc+ +cd+ +ce+ +cf+ +cg+ +ch+ +ci+ +cj+ +ck+ +cl+ +cm+ +cn+ +co+ +cp+ +cq+ +cr+ +cs+ +ct+ +cu+ +cv+ +cw+ +cx+ +cy+ +cz+ +da+ +db+ +dc+ +dd+ +de+ +df+ +dg+ +dh+ +di+ +dj+ +dk+ +dl+ +dm+ +dn+ +do+ +dp+ +dq+ +dr+ +ds+ +dt+ +du+ +dv+ +dw+ +dx+ +dy+ +dz+ +ea+ +eb+ +ec+ +ed+ +ee+ +ef+ +eg+ +eh+ +ei+ +ej+ +ek+ +el+ +em+ +en+ +eo+ +ep+ +eq+ +er+ +es+ +et+ +eu+ +ev+ +ew+ +ex+ +ey+ +ez+ +fa+ +fb+ +fc+ +fd+ +fe+ +ff+ +fg+ +fh+ +fi+ +fj+ +fk+ +fl+ +fm+ +fn+ +fo+ +fp+ +fq+ +fr+ +fs+ +ft+ +fu+ +fv+ +fw+ +fx+ +fy+ +fz+ +ga+ +gb+ +gc+ +gd+ +ge+ +gf+ +gg+ +gh+ +gi+ +gj+ +gk+ +gl+ +gm+ +gn+ +go+ +gp+ +gq+ +gr+ +gs+ +gt+ +gu+ +gv+ +gw+ +gx+ +gy+ +gz+ +ha+ +hb+ +hc+ +hd+ +he+ +hf+ +hg+ +hh+ +hi+ +hj+ +hk+ +hl+ +hm+ +hn+ +ho+ +hp+ +hq+ +hr+ +hs+ +ht+ +hu+ +hv+ +hw+ +hx+ +hy+ +hz+ +ia+ +ib+ +ic+ +id+ +ie+ +if+ +ig+ +ih+ +ii+ +ij+ +ik+ +il+ +im+ +in+ +io+ +ip+ +iq+ +ir+ +is+ +it+ +iu+ +iv+ +iw+ +ix+ +iy+ +iz+ +ja+ +jb+ +jc+ +jd+ +je+ +jf+ +jg+ +jh+ +ji+ +jj+ +jk+ +jl+ +jm+ +jn+ +jo+ +jp+ +jq+ +jr+ +js+ +jt+ +ju+ +jv+ +jw+ +jx+ +jy+ +jz+ +ka+ +kb+ +kc+ +kd+ +ke+ +kf+ +kg+ +kh+ +ki+ +kj+ +kl+ +km+ +kn+ +ko+ +kp+ +kq+ +kr+ +ks+ +kt+ +ku+ +kv+ +kw+ +kx+ +ky+ +kz+ +la+ +lb+ +lc+ +ld+ +le+ +lf+ +lg+ +lh+ +li+ +lj+ +lk+ +lm+ +ln+ +lo+ +lp+ +lq+ +lr+ +ls+ +lt+ +lu+ +lv+ +lw+ +lx+ +ly+ +lz+ +ma+ +mb+ +mc+ +md+ +me+ +mf+ +mg+ +mh+ +mi+ +mj+ +mk+ +ml+ +mm+ +mn+ +mo+ +mp+ +mq+ +mr+ +ms+ +mt+ +mu+ +mv+ +mw+ +mx+ +my+ +mz+ +na+ +nb+ +nc+ +nd+ +ne+ +nf+ +ng+ +nh+ +ni+ +nj+ +nk+ +nl+ +nm+ +nn+ +no+ +np+ +nq+ +nr+ +ns+ +nt+ +nu+ +nv+ +nw+ +nx+ +ny+ +nz+ +oa+ +ob+ +oc+ +od+ +oe+ +of+ +og+ +oh+ +oi+ +oj+ +ok+ +ol+ +om+ +on+ +oo+ +op+ +oq+ +or+ +os+ +ot+ +ou+ +ov+ +ow+ +ox+ +oy+ +oz+ +pa+ +pb+ +pc+ +pd+ +pe+ +pf+ +pg+ +ph+ +pi+ +pj+ +pk+ +pl+ +pm+ +pn+ +po+ +pp+ +pq+ +pr+ +ps+ +pt+ +pu+ +pv+ +pw+ +px+ +py+ +pz+ +qa+ +qb+ +qc+ +qd+ +qe+ +qf+ +qg+ +qh+ +qi+ +qj+ +qk+ +ql+ +qm+ +qn+ +qo+ +qp+ +qq+ +qr+ +qs+ +qt+ +qu+ +qv+ +qw+ +qx+ +qy+ +qz+ +ra+ +rb+ +rc+ +rd+ +re+ +rf+ +rg+ +rh+ +ri+ +rj+ +rk+ +rl+ +rm+ +rn+ +ro+ +rp+ +rq+ +rr+ +rs+ +rt+ +ru+ +rv+ +rw+ +rx+ +ry+ +rz+ +sa+ +sb+ +sc+ +sd+ +se+ +sf+ +sg+ +sh+ +si+ +sj+ +sk+ +sl+ +sm+ +sn+ +so+ +sp+ +sq+ +sr+ +ss+ +st+ +su+ +sv+ +sw+ +sx+ +sy+ +sz+ +ta+ +tb+ +tc+ +td+ +te+ +tf+ +tg+ +th+ +ti+ +tj+ +tk+ +tl+ +tm+ +tn+ +to+ +tp+ +tq+ +tr+ +ts+ +tu+ +tv+ +tw+ +tx+ +ty+ +tz+ +ua+ +ub+ +uc+ +ud+ +ue+ +uf+ +ug+ +uh+ +ui+ +uj+ +uk+ +ul+ +um+ +un+ +uo+ +up+ +uq+ +ur+ +us+ +ut+ +uu+ +uv+ +uw+ +ux+ +uy+ +uz+ +va+ +vb+ +vc+ +vd+ +ve+ +vf+ +vg+ +vh+ +vi+ +vj+ +vk+ +vl+ +vm+ +vn+ +vo+ +vp+ +vq+ +vr+ +vs+ +vt+ +vu+ +vv+ +vw+ +vx+ +vy+ +vz+ +wa+ +wb+ +wc+ +wd+ +we+ +wf+ +wg+ +wh+ +wi+ +wj+ +wk+ +wl+ +wm+ +wn+ +wo+ +wp+ +wq+ +wr+ +ws+ +wt+ +wu+ +wv+ +ww+ +wx+ +wy+ +wz+ +xa+ +xb+ +xc+ +xd+ +xe+ +xf+ +xg+ +xh+ +xi+ +xj+ +xk+ +xl+ +xm+ +xn+ +xo+ +xp+ +xq+ +xr+ +xs+ +xt+ +xu+ +xv+ +xw+ +xx+ +xy+ +xz+ +ya+ +yb+ +yc+ +yd+ +ze+ +zf+ +zg+ +zh+ +zi+ +zj+ +zk+ +zl+ +zm+ +zn+ +zo+ +zp+ +zq+ +zr+ +zs+ +zt+ +zu+ +zv+ +zw+ +zx+ +zy+ +zz+ +aa+ +ab+ +ac+ +ad+ +ae+ +af+ +ag+ +ah+ +ai+ +aj+ +ak+ +al+ +am+ +an+ +ao+ +ap+ +aq+ +ar+ +as+ +at+ +au+ +av+ +aw+ +ax+ +ay+ +az+ +ba+ +bb+ +bc+ +bd+ +be+ +bf+ +bg+ +bh+ +bi+ +bj+ +bk+ +bl+ +bm+ +bn+ +bo+ +bp+ +bq+ +br+ +bs+ +bt+ +bu+ +bv+ +bw+ +bx+ +by+ +bz+ +ca+ +cb+ +cc+ +cd+ +ce+ +cf+ +cg+ +ch+ +ci+ +cj+ +ck+ +cl+ +cm+ +cn+ +co+ +cp+ +cq+ +cr+ +cs+ +ct+ +cu+ +cv+ +cw+ +cx+ +cy+ +cz+ +da+ +db+ +dc+ +dd+ +de+ +df+ +dg+ +dh+ +di+ +dj+ +dk+ +dl+ +dm+ +dn+ +do+ +dp+ +dq+ +dr+ +ds+ +dt+ +du+ +dv+ +dw+ +dx+ +dy+ +dz+ +ea+ +eb+ +ec+ +ed+ +ee+ +ef+ +eg+ +eh+ +ei+ +ej+ +ek+ +el+ +em+ +en+ +eo+ +ep+ +eq+ +er+ +es+ +et+ +eu+ +ev+ +ew+ +ex+ +ey+ +ez+ +fa+ +fb+ +fc+ +fd+ +fe+ +ff+ +fg+ +fh+ +fi+ +fj+ +fk+ +fl+ +fm+ +fn+ +fo+ +fp+ +fq+ +fr+ +fs+ +ft+ +fu+ +fv+ +fw+ +fx+ +fy+ +fz+ +ga+ +gb+ +gc+ +gd+ +ge+ +gf+ +gg+ +gh+ +gi+ +gj+ +gk+ +gl+ +gm+ +gn+ +go+ +gp+ +gq+ +gr+ +gs+ +gt+ +gu+ +gv+ +gw+ +gx+ +gy+ +gz+ +ha+ +hb+ +hc+ +hd+ +he+ +hf+ +hg+ +hh+ +hi+ +hj+ +hk+ +hl+ +hm+ +hn+ +ho+ +hp+ +hq+ +hr+ +hs+ +ht+ +hu+ +hv+ +hw+ +hx+ +hy+ +hz+ +ia+ +ib+ +ic+ +id+ +ie+ +if+ +ig+ +ih+ +ii+ +ij+ +ik+ +il+ +im+ +in+ +io+ +ip+ +iq+ +ir+ +is+ +it+ +iu+ +iv+ +iw+ +ix+ +iy+ +iz+ +ja+ +jb+ +jc+ +jd+ +je+ +jf+ +jg+ +jh+ +ji+ +jj+ +jk+ +jl+ +jm+ +jn+ +jo+ +jp+ +jq+ +jr+ +js+ +jt+ +ju+ +jv+ +jw+ +jx+ +jy+ +jz+ +ka+ +kb+ +kc+ +kd+ +ke+ +kf+ +kg+ +kh+ +ki+ +kj+ +kl+ +km+ +kn+ +ko+ +kp+ +kq+ +kr+ +ks+ +kt+ +ku+ +kv+ +kw+ +kx+ +ky+ +kz+ +la+ +lb+ +lc+ +ld+ +le+ +lf+ +lg+ +lh+ +li+ +lj+ +lk+ +lm+ +ln+ +lo+ +lp+ +lq+ +lr+ +ls+ +lt+ +lu+ +lv+ +lw+ +lx+ +ly+ +lz+ +ma+ +mb+ +mc+ +md+ +me+ +mf+ +mg+ +mh+ +mi+ +mj+ +mk+ +ml+ +mm+ +mn+ +mo+ +mp+ +mq+ +mr+ +ms+ +mt+ +mu+ +mv+ +mw+ +mx+ +my+ +mz+ +na+ +nb+ +nc+ +nd+ +ne+ +nf+ +ng+ +nh+ +ni+ +nj+ +nk+ +nl+ +nm+ +nn+ +no+ +np+ +nq+ +nr+ +ns+ +nt+ +nu+ +nv+ +nw+ +nx+ +ny+ +nz+ +oa+ +ob+ +oc+ +od+ +oe+ +of+ +og+ +oh+ +oi+ +oj+ +ok+ +ol+ +om+ +on+ +oo+ +op+ +oq+ +or+ +os+ +ot+ +ou+ +ov+ +ow+ +ox+ +oy+ +oz+ +pa+ +pb+ +pc+ +pd+ +pe+ +pf+ +pg+ +ph+ +pi+ +pj+ +pk+ +pl+ +pm+ +pn+ +po+ +pp+ +pq+ +pr+ +ps+ +pt+ +pu+ +pv+ +pw+ +px+ +py+ +pz+ +qa+ +qb+ +qc+ +qd+ +qe+ +qf+ +qg+ +qh+ +qi+ +qj+ +qk+ +ql+ +qm+ +qn+ +qo+ +qp+ +qq+ +qr+ +qs+ +qt+ +qu+ +qv+ +qw+ +qx+ +qy+ +qz+ +ra+ +rb+ +rc+ +rd+ +re+ +rf+ +rg+ +rh+ +ri+ +rj			

# USEFUL LINK

⦿ <http://contratseuropeens.cnrs.fr/>



Site de l'administration

Guide Europe CNRS  
Référéntiel des procédures de gestion des contrats européens au CNRS

Contrats européens

ACCUEIL

Le **Guide Europe du CNRS** a été transféré dans [l'intranet du CNRS](#), rubrique COOPERER.  
Nous vous y attendons pour un contenu enrichi et actualisé

Quelques liens utiles...

Horizon 2020, le portail français du programme européen pour la recherche et l'innovation Le...

Articles récents

Quelques liens utiles...

Archives

juillet 2015

Crédits

CNRS - Centre national de la recherche scientifique  
3, rue Michel-Ange  
75794 Paris cedex 16 - France  
Téléphone : +33 1 44 96 40 00  
Télécopie : +33 1 44 96 53 90  
Directrice de la publication : Anne Peyroche  
Directrice de la rédaction : Brigitte Perucca  
Hébergeur : CNRS

© Guide Europe du CNRS - Powered by [WordPress](#) and [WPThemes.co.uk](#)

# Partnership and Valuation Service

## - Research Contracts -

- Engineering and Follow-up of the various types of **contracts**:

- Non disclosure Agreement (NDA)
- Material Transfer Agreement (MTA)
- Collaborative Research Contract
- Consortium Agreement
- Service Delivery Contract

Project engineering and structuring (legal, administrative, financial, negotiation, follow-up)

- Invention disclosure (Patent / Software)



# Partnership and Valuation Service

## - Research Contracts -

### NDA

- Protection before Patents
- Protection of information in the pre-contract stage
- Setting up confidentiality rules

### MTA

- Protection of the materiel
- Establishing rules regarding use of the material
- Establishing rules regarding results, property and communications



### Service Delivery Contract

- Existing Knowledge in the Lab (Background)

Specific know-how, skills and equipment, Patent / Software

- Use of Background Knowledge for efficient Service Delivery
- Background Knowledge is the Property of the Lab
- New Knowledge / Result as Service is the property of the Partner
- Obligation of Results

P.20

### Collaborative Research Contract & Consortium Agreement

- Existing knowledge in the Lab (Background)

Specific know-how, skills and equipment, Patent / Software

- New knowledge for the Lab (Sideground)
- New knowledge shared by the Parties due to the collaboration (Foreground)
- Potential inventions
- Property of results and IP
- Obligation of Due Care / Best- Efforts



# « Best Practices »

*What should I do if I'm contacted by a partner or if I wish to collaborate with a partner (industrial, academic, public, foreign entity) ?*

Quick email to SPV ([DR20.SPV@cnrs.fr](mailto:DR20.SPV@cnrs.fr)) in order to :

- determine the type of the contract and its obligations;
- determine your own Background Knowledge (intellectual property rights, know-how, patents, programs, etc.);
- understand the type of technology to be developed and its industrial applications/exploitation;
- do financial estimation for the contract
- establish an NDA if necessary (in order to cover pre-contract exchange period, for confidentiality reasons)



## Reminder:

- Please remember that the only person authorized to sign a contract (involving a research unit under the supervision of the CNRS and a partner) is the Regional Delegate and not the Principal Investigator or the Unit Director.
- Signature Time > Contractual Negotiations + Administrative Procedures



[www.cnrs.fr](http://www.cnrs.fr)

# Thank you for your attention !

**Service Partenariat et Valorisation - Cellule Contrats européens**

