



**i n s t i t u t** **V a l r o s e**  
**B i o l o g i e**

# Study visit - project HERD

-----

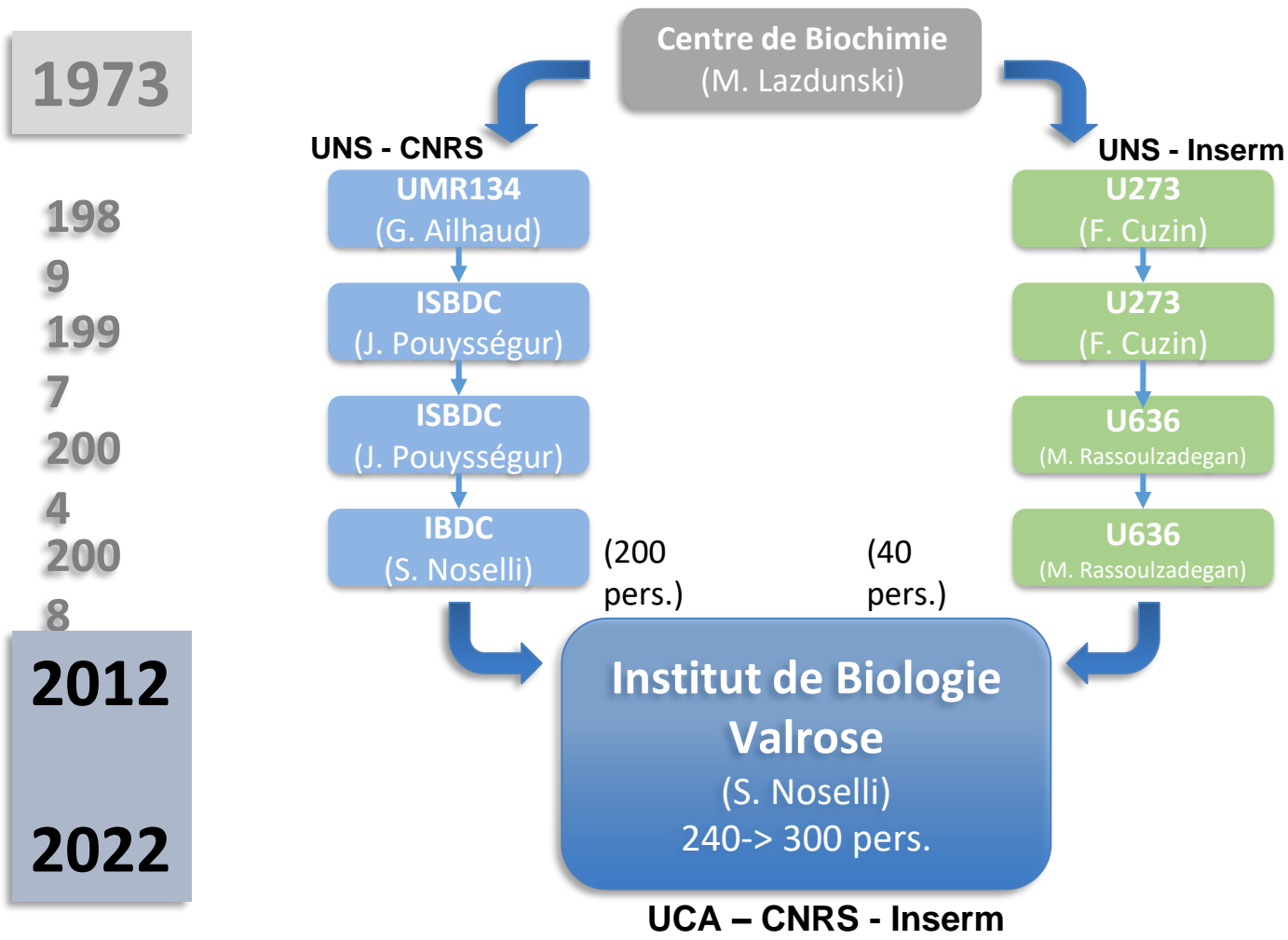
October 7-13, 2019

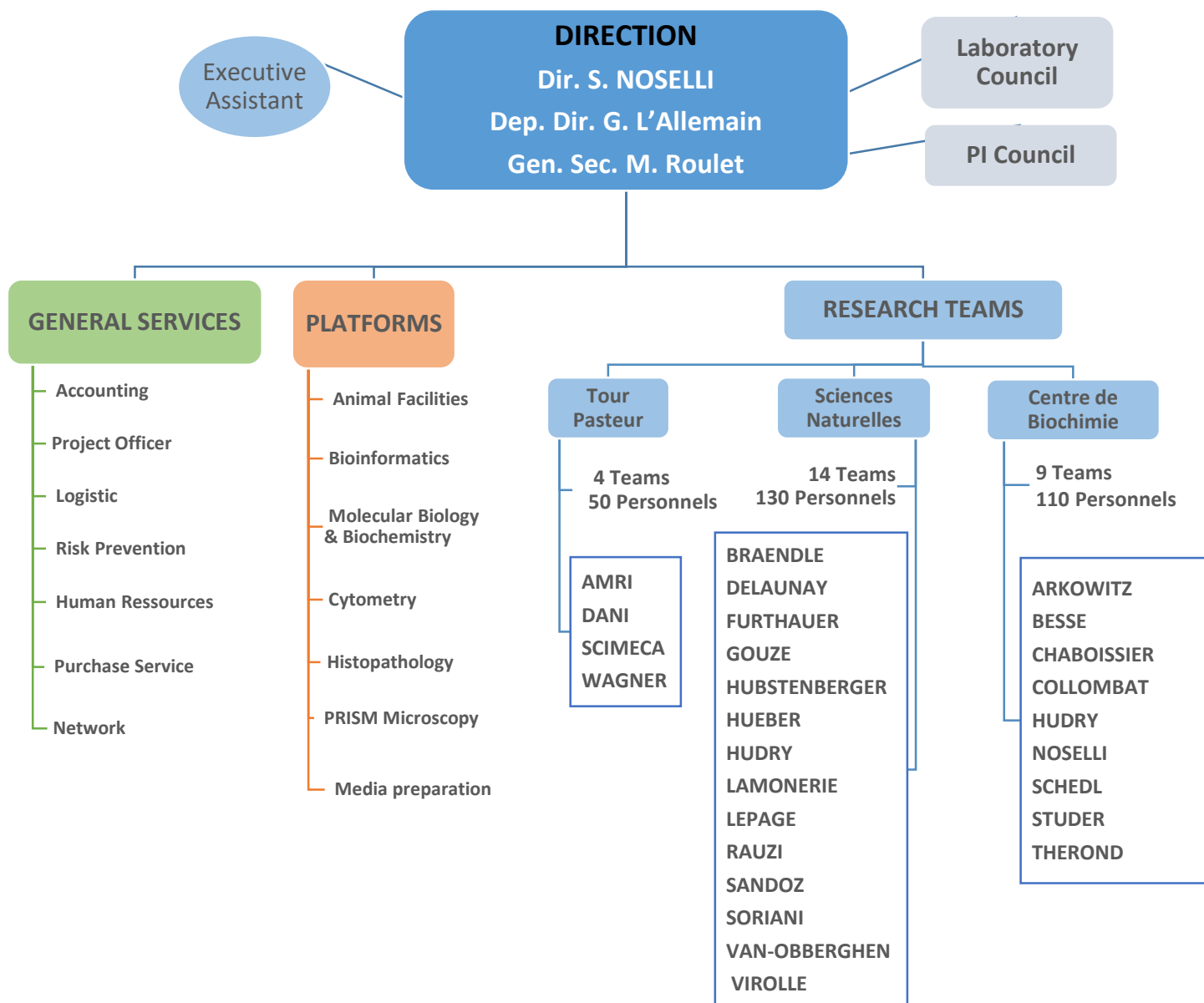
UNIVERSITÉ  
CÔTE D'AZUR



**Inserm**









### INSTITUTIONAL

### University, CNRS, Inserm

### EXTERNAL

**PUBLIC:** ANR, INCA, LabEx SIGNALIFE, LabEx ICST, CNES, GIS IBISA, Conseil Départemental 06, Conseil Régional PACA, Nice City, Cancéropôle PACA, FUI, Pôle de Compétitivité, Campus France, CNES, IBISA, MAE, CHU, Inserm Transfert, ITMO Cancer, SATT Sud Est, IDEX Sorbonne Universités

**EU / international:** ERC, Marie Curie, FP7-people, HFSP, NSF, Nutricia Research Foundation, EMBO, AICR, JDRF, Centre de Cooperation Universitaire Franco-Bavarois, France-Berkeley-Fund, France-Canada Research Foundation, French Embassy in Rome/Campus, French-Italian University, Nutricia Research Foundation, TERRI

**PRIVATE / Foundations:** ARC, Ligue/LNCC, Fondation pour la Recherche Médicale, Fondation de France, Institut de France, AFM, Fondation Maladies Rares, Retina France, Duchenne Parent Project, ANRS, INSTITUT DE France - Fondation NRJ, Fonds Arard, Société Francophone du Diabète, Soc. Française de Nutrition, France Cancer 06, Vaincre la Mucoviscidose, Cancer-Aidez la Recherche, Fédération Recherche sur le Cerveau, FFAES, ADERTU, AFM-Téléthon, Polyclinique St Jean, Association Dimitri Bessièrre, Association Sauvons Laura, Association TI'TOINE, Association Titou'an, Club Isatis, DPJ, Eva pour la vie, FCA, Fondation de l'Avenir, Fondation des Gueules Cassées, Fondation du Rein, Fondation Fyssen, Fondation Jérôme Lejeune, FRC, FSER, GOTHa, Mr et Mme Dorato, Sidaction, INTER, COST action

**INDUSTRIAL:** TherAchon, GSK, AXA, Galderma, Servier, Merck Y St Laurent Roche Novonordisk

### SALARIES

9.87 M€ (84%)

1.87 M€ (16%)

### RUNNING

0.85 M€ (16%)

4.4 M€ (84%)





Multiscale : From **cells** to **organisms** and their **pathologies**

## CELL

Membrane  
Polarity  
Signaling  
Traffic  
Cytoskeleton  
Adhesion  
Morphology  
, etc..



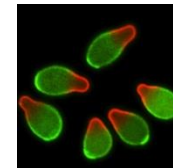
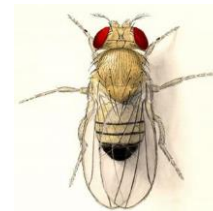
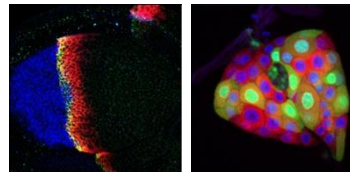
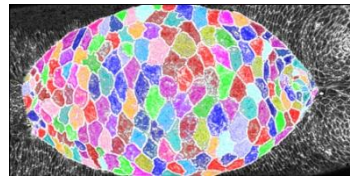
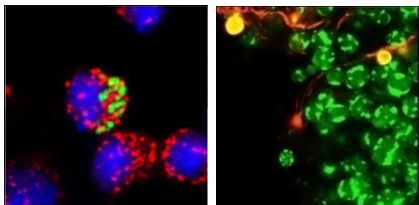
## ORGAN-TISSUE

Signaling  
Cancer  
Growth  
Patterning  
Migration  
Morphogenesis  
Function,  
etc..



## ORGANISM

Polarity, nutrition, growth, circadian rhythm, environment, cancer, diabetes, heredity, fat mass, kidney diseases, sex determination, bone tissue, nervous system, achondroplasia, membrane channels, etc..





## COMMUNICATIONS

INVITED SPEAKER		INVITED SEMINARS		ORAL COMMUNICATIONS		POSTERS		TOTAL
International	National	International	National	International	National	International	National	
220	53	52	66	117	48	211	43	822

140+

## 56 INVITED REVIEWS

in leading journals

## 319 COLLABORATIONS

182 international – 137 national

## COMMITTEES

Funding, recruitment, Advisory Boards, etc..

## EVALUATIO

Scientific journals, Funding Bodies (national, international)

- 2 LABEX (SIGNALIFE and ICST)
- 3 ERC (2 Advanced & 1 Starting)
- 13 ATIP - AVENIR, CNRS and Inserm
- 3 EMBO Members
- 4 EMBO YIP
- 2 HFSP Career Award Development
- 1 JDRF Career Development Award
- 1 Silver Medal, CNRS
- 5 Bronze Medals, CNRS
- 2 Inserm Prizes
- 8 Prizes, French Academy of Sciences
- 1 Prize, French Academy of Medicine
- 1 Prize, Bettencourt-Schueller Foundation
- 2 Prizes, Schlumberger Foundation
- 1 Senior Chair of Excellence, ANR
- 1 Prize, German Physiological Society
- 1 Fellow, Institute for Advanced Study, Berlin
- 1 Prize, L'Oréal
- 1 Prize, Fondation de France
- 2 Prizes, Fondation Schlumberger
- 3 Teams, 'Ligue contre le Cancer'
- 5 Teams, Fondation Recherche Médicale
- 3 Teams, Association Recherche contre le Cancer
- 8 EU grants/Fellowships
- 1 Biotech company (35M\$ fund raising)